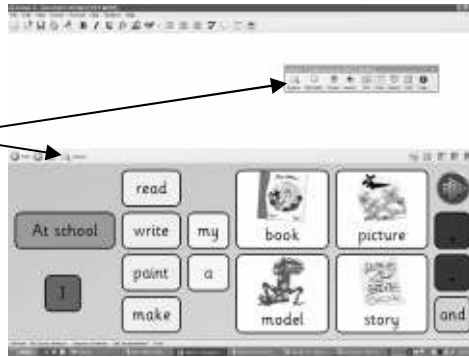


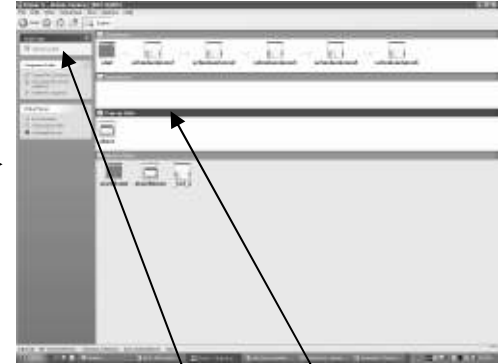
Clicker 5

Adding a new pop-up grid to a grid set

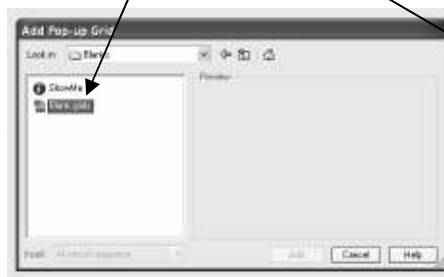
In Edit Mode,
click on Explorer.



Use the back button to go to Templates.
Double click on Blanks and double click on
Blank grids. Choose a pop-up grid.



Click Pop-up Grids
and then on Add
pop-up grid.



Tall pop-up



WideA pop-up



WideB pop-up



Square pop-up



New pop-up

